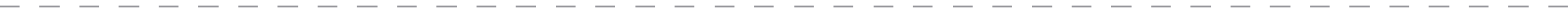


the -
ideo & KABO

extra
issue 1.4: flush face / 赤面

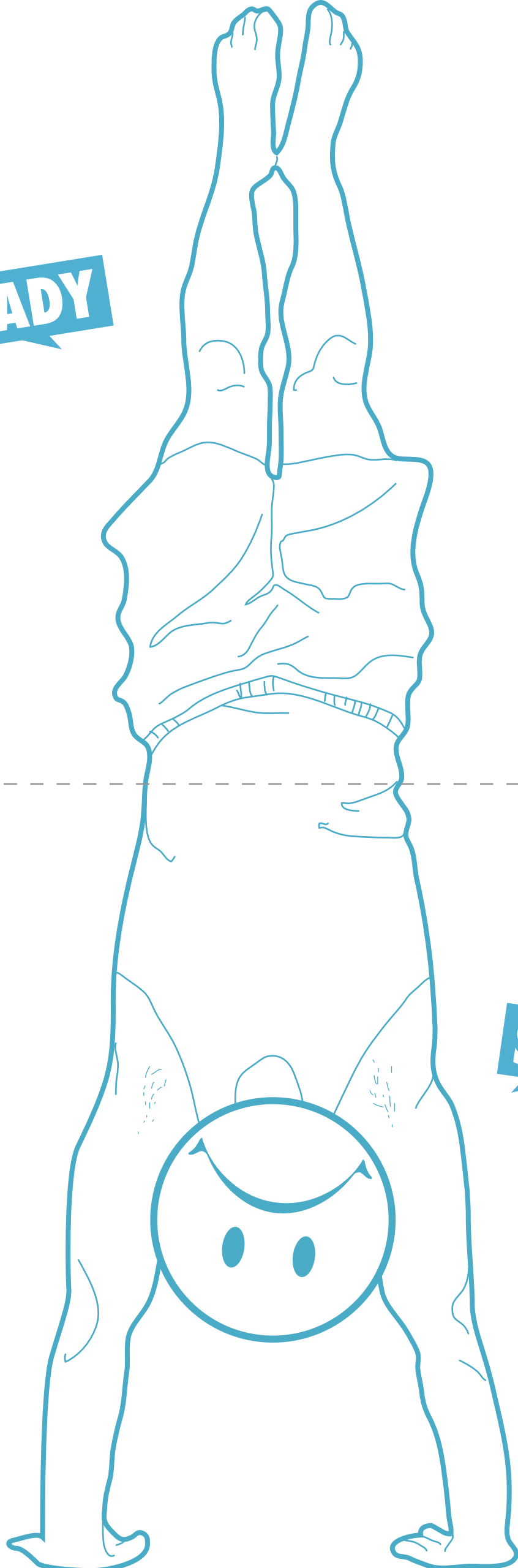
INTRODUCING

CLICK DOWNWARD PHOTO TO PREVIOUS PAGE



CLICK UPWARD PHOTO TO NEXT PAGE

NOT READY

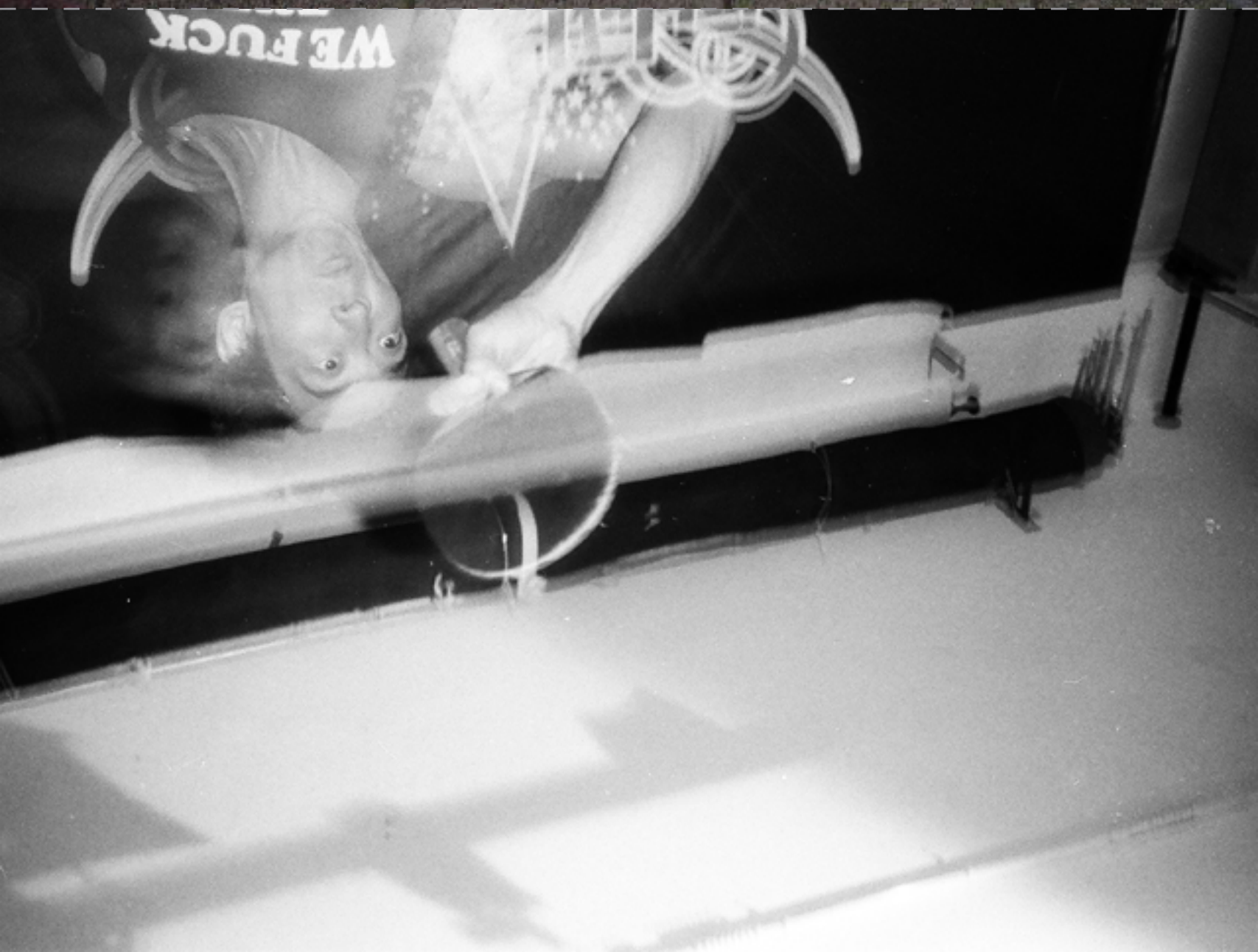


START







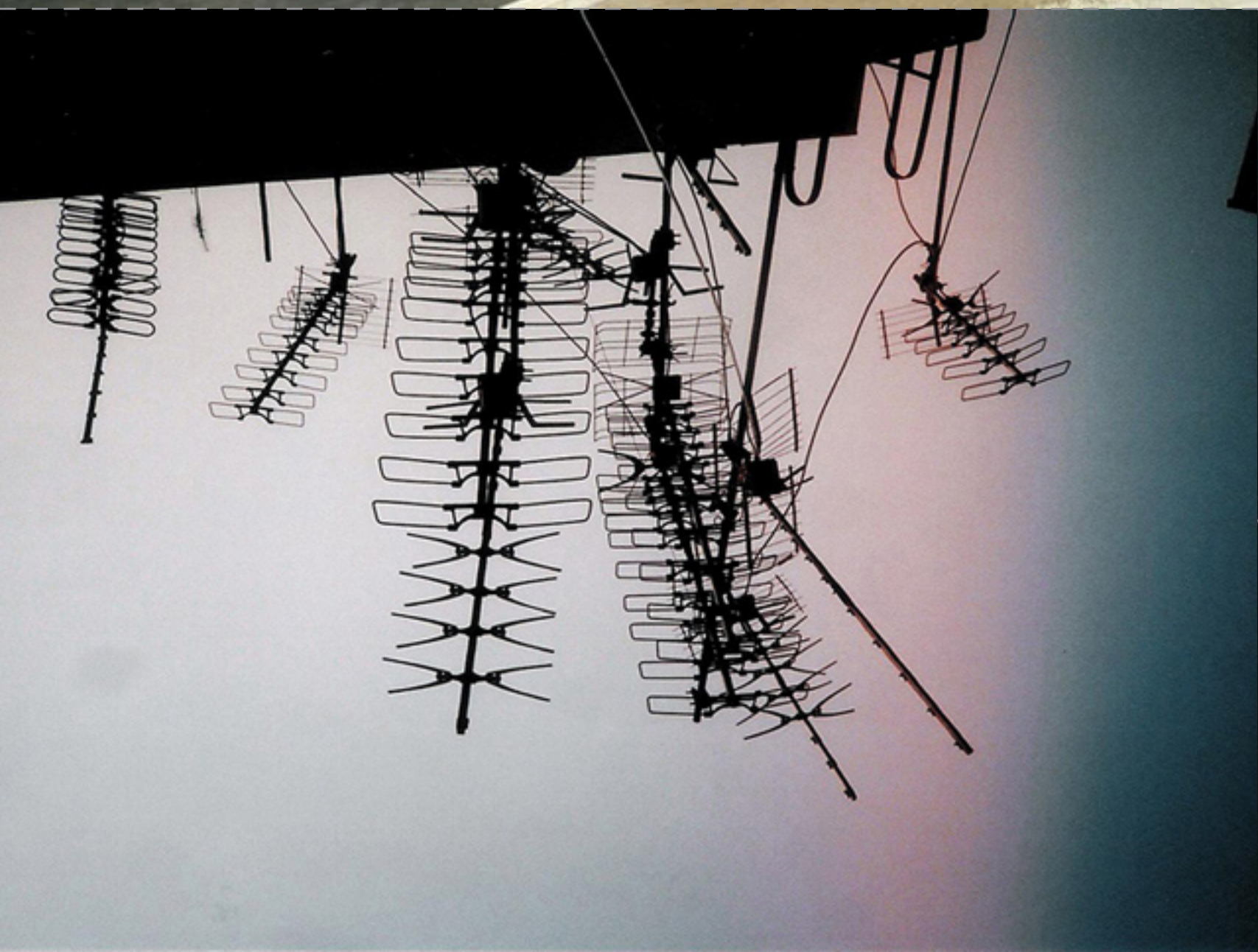






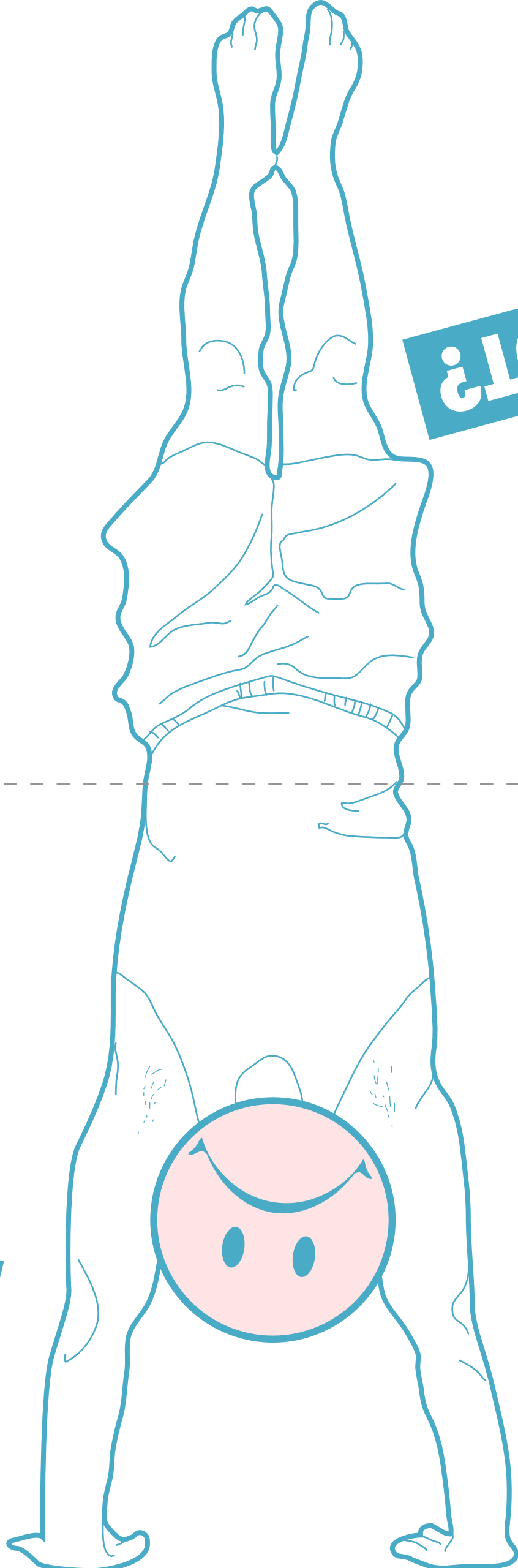






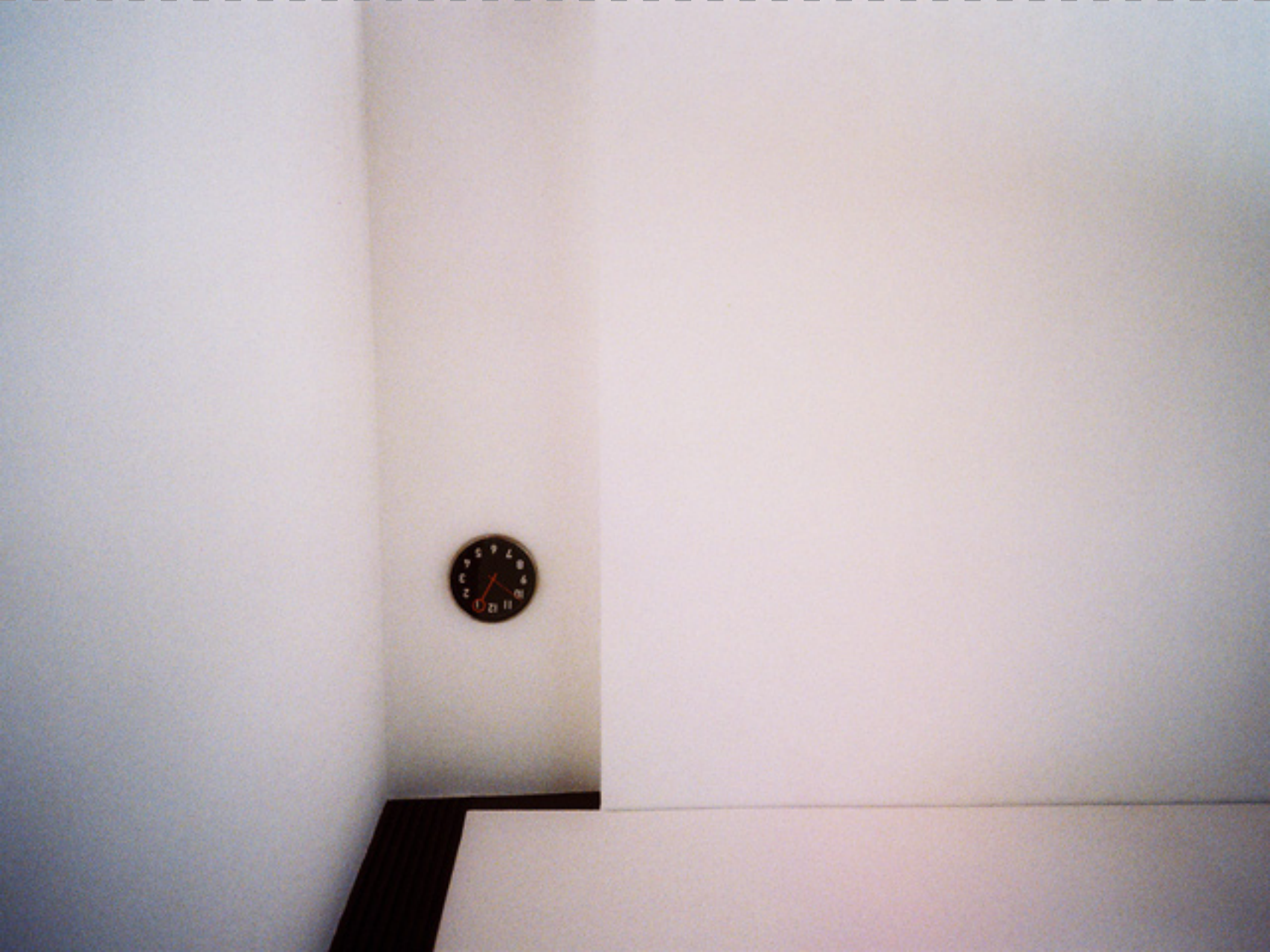
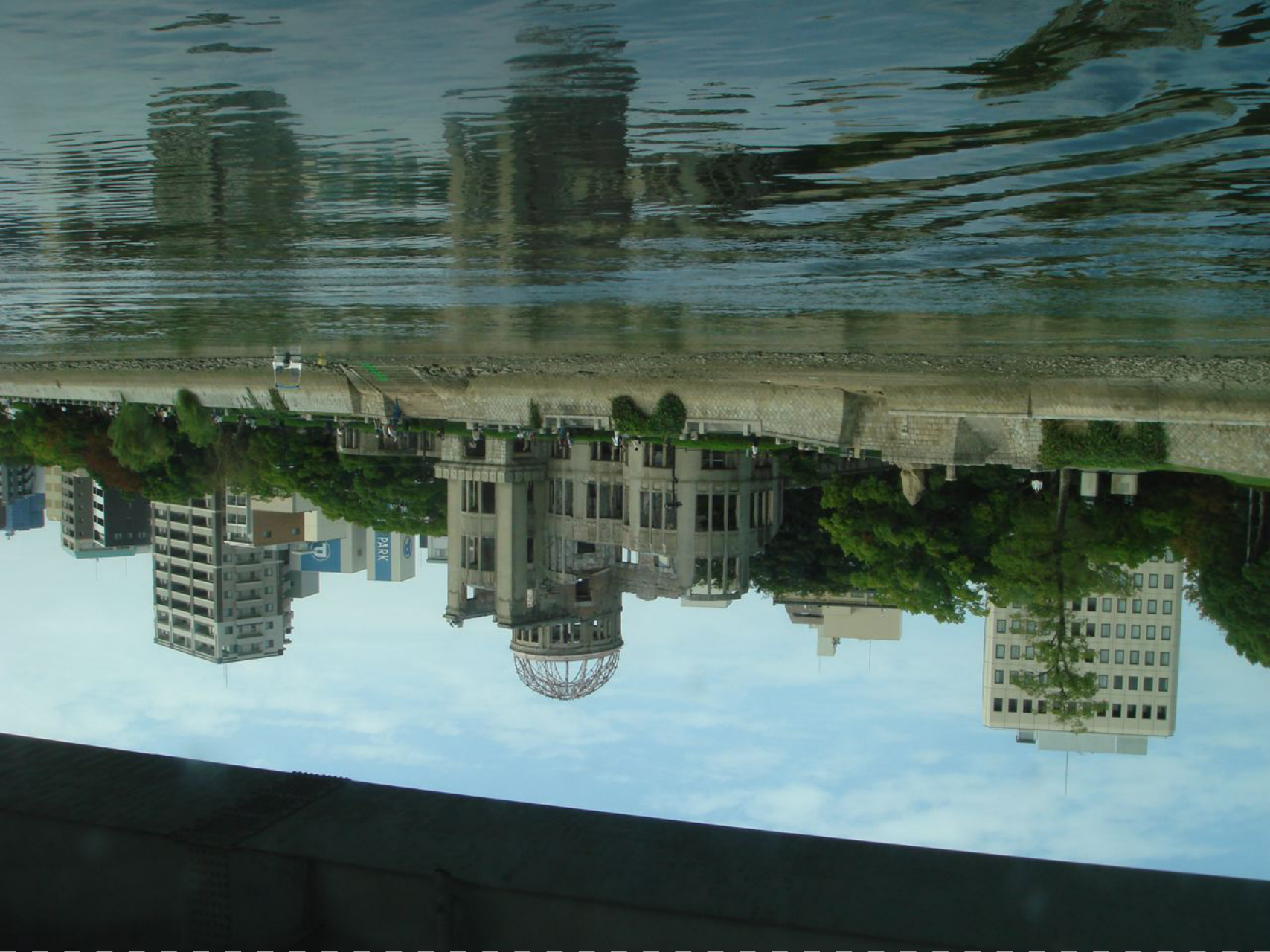


OK?



OR NOT?











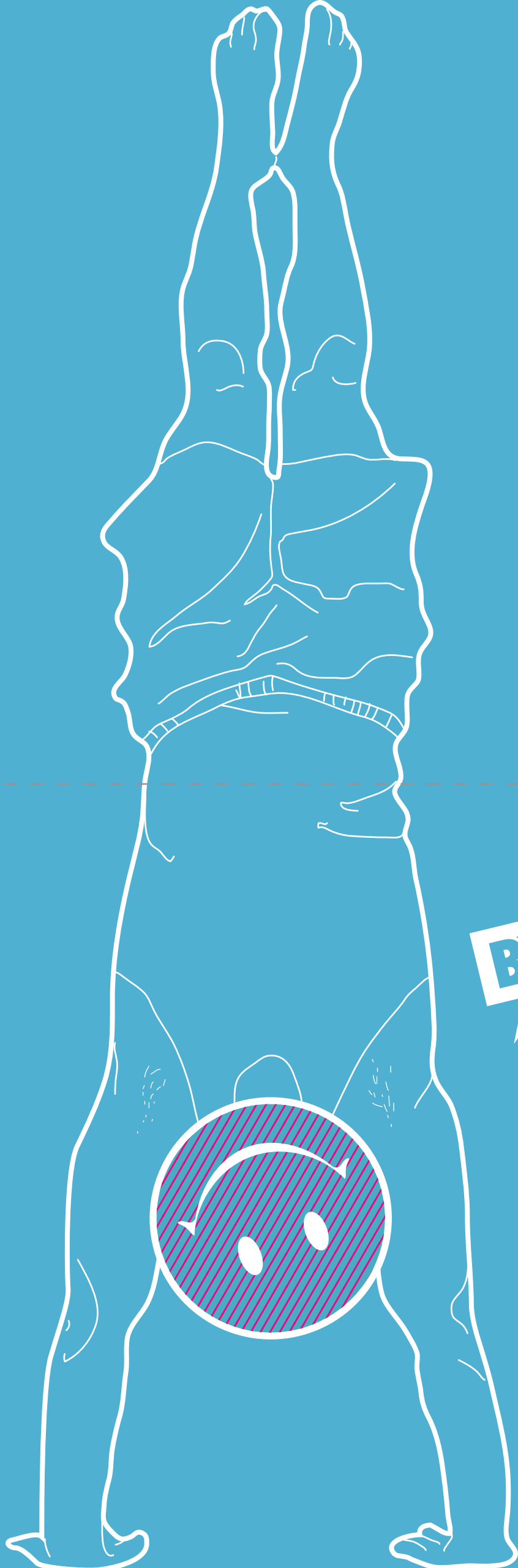












BYE BYE

$$KAB \text{ (iii)}$$

when I was in primary school, There is interesting ~~teacher~~ teacher
one autumn day, all the class mate go out for sketch "Tree" for art.
in the middle of sketch, teacher asked us to see
"upside down"
Real tree looks nice even upside down.
my ~~teacher~~ picture looks something wrong.
All the class mate try to see "upside down" by their own way.

$$KAB \text{ (11)}$$

小宮村に2つある
美しい美術館。
秋の日に外に出る
と、この美術館は、
「F & T」の2つある。

来物、木は上下逆、
美い。
自然の造り
自然に反した。
自然に反した。
自然に反した。
自然に反した。

細路個陣時最鍾意
係碌架床上格倒疊
蔥掛落嚟望出窗，
成個世界唔同晒！！

"K5"

One of my childhood favourite
acts, was to dangle from
the upper deck of the bunk
bed, and look at the world
upside down.

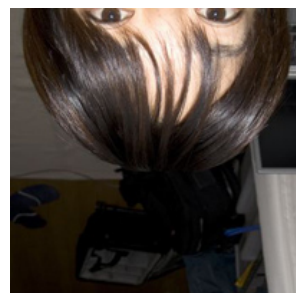
"K5"

the - ideo & KABO

extra
issue 1.4: flush face / 赤面



upward photo by **ks**
<http://the-ideo.org/ks/>



downward photo by **KABO**
kabo@kg8.so-net.ne.jp